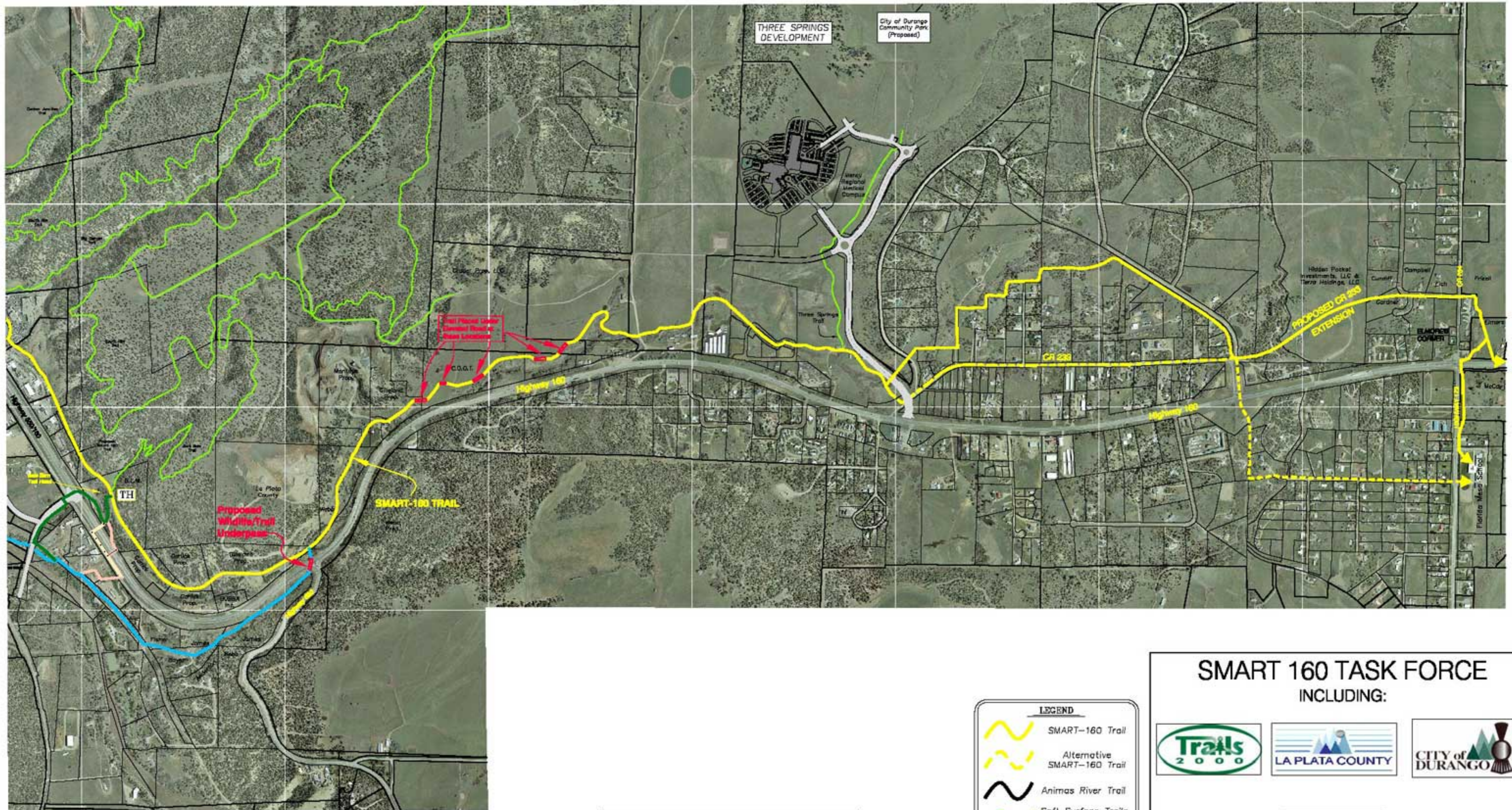




SCALE: 1 INCH = 1/4 MILE

SMART-160 TRAIL



SHOWN ALIGNMENTS ARE CONCEPTUAL AND SUBJECT TO FURTHER REVIEW AND CHANGES

LEGEND

- SMART-160 Trail
- Alternative SMART-160 Trail
- Animas River Trail
- Soft Surface Trails & Planned Extensions
- Trail Head

SMART 160 TASK FORCE INCLUDING:

The task force includes logos for Trails 2000, La Plata County, City of Durango, Goff Engineering + Consulting Inc, DOT, and Three Springs.